

2-IN-1 WASTE OIL DRAINER AND CHANGER



Item# 1610650 / 1610651 / 1610900 / 1610901
(AODE Series)

REV 10/22/14

WARNING

Read carefully and understand all INSTRUCTIONS before operating. Failure to follow the safety rules and other basic safety precautions may result in serious personal injury. Save these instructions in a safe place and on hand so that they can be read when required. Keep these instructions to assist in future servicing.

SAFETY PRECAUTIONS

GENERAL SAFETY RULES

WARNING: Read and understand all instructions.

WARNING: The warnings, cautions, and instructions discussed in this instruction manual cannot cover all possible conditions or situations that could occur. It must be understood by the operator that common sense and caution are factors which cannot be built into this product, but must be supplied by the operator.

WARNING

- Do not extract caustic or flammable products
- Do not expose the reservoir to any source of heat
- While extracting high temperature oils, keep hands and face protected
- Only use the device for the purpose for which it has been designed
- Do not modify any component of the equipment
- Only use original spare parts
- Our technical office is at your full disposal for any information you may need

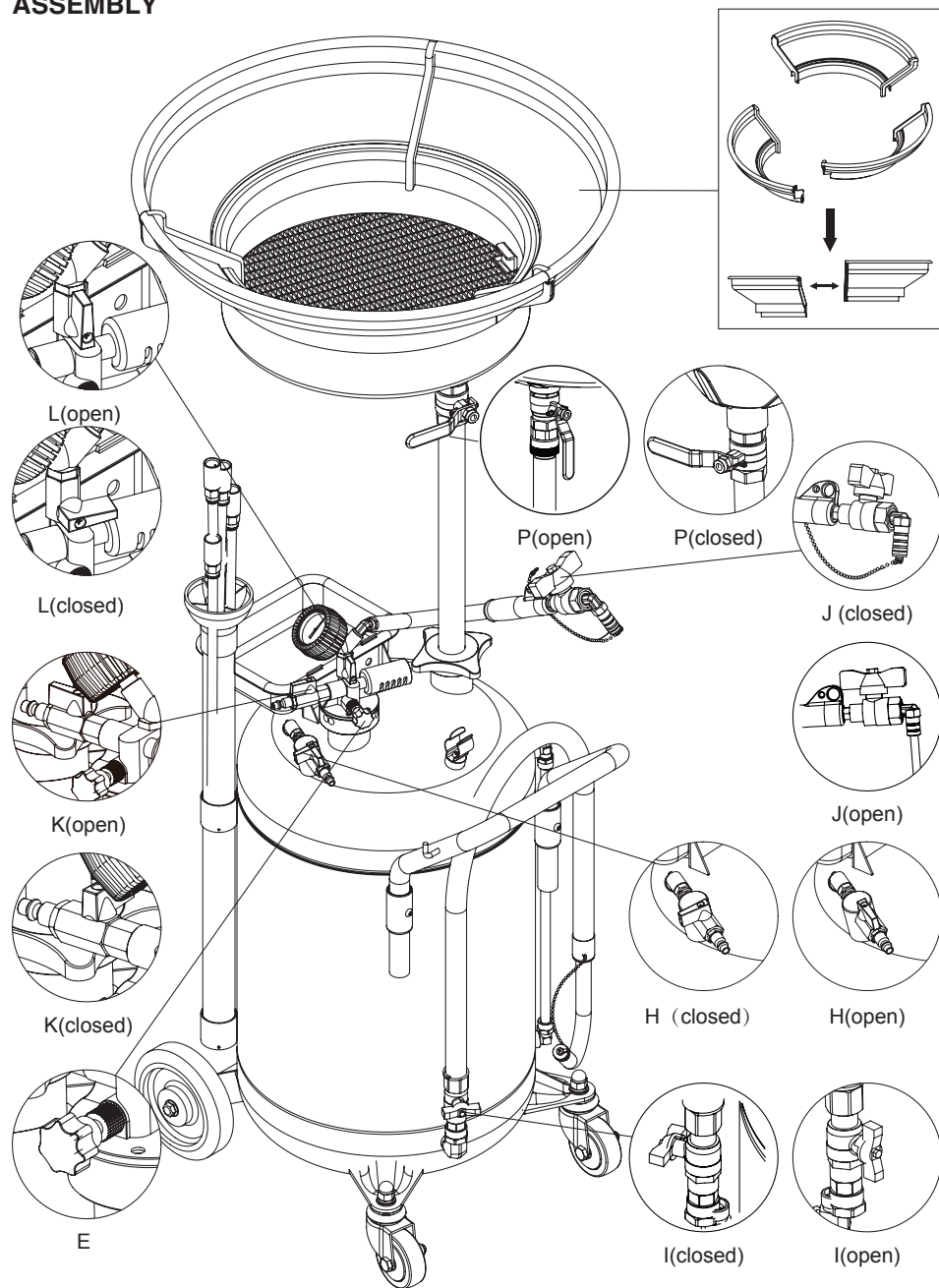
PRODUCT DATA

Item No.	16106509	16106511	16109009	16109011
Air inlet	1/4"quick plug	1/4"quick plug	1/4"quick plug	1/4"quick plug
Extension funnel	No	Yes	No	Yes
Capacity	65L/17Gal	65L/17Gal	90L/24Gal	90L/24Gal

Item No.	16106510	16106512	16109010	16109012
Air inlet	1/4"NPT	1/4"NPT	1/4"NPT	1/4"NPT
Extension funnel	No	Yes	No	Yes
Capacity	65L/17Gal	65L/17Gal	90L/24Gal	90L/24Gal

- Air pressure for vacuum: 7~8bar/100~115psi
- Max draining pressure: 1bar/14.5psi
- Suction speed: (oil temperature <90°C, suction tube diameterΦ6mm): 2 lpm/0.5gpm
- Suction tube length: 2000mm/78.7"
- Draining hose length: 2000mm/78.7"
- Collection bowl capacity: 18L/4.8Gal
- Extension Funnel diameter: 606mm/23.8"

ASSEMBLY



ASSEMBLY

Fig.1: Assemble the handle(B) and the air inlet fitting, turn off the ball valve(H).

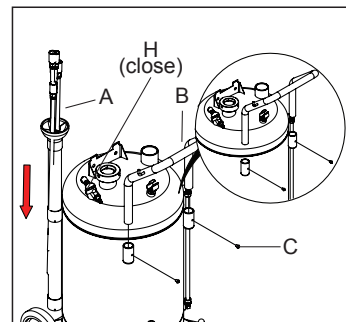


Fig.3: Insert the tube(N) into the reservoir, then turn the handwheel(O) clockwise direction and tighten.

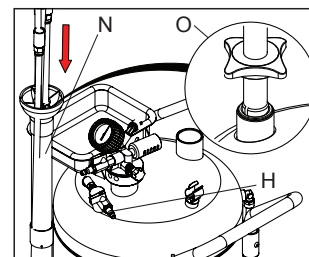


Fig.2: Assemble the vacuum gauge(D) and turn off the ball valve(J).

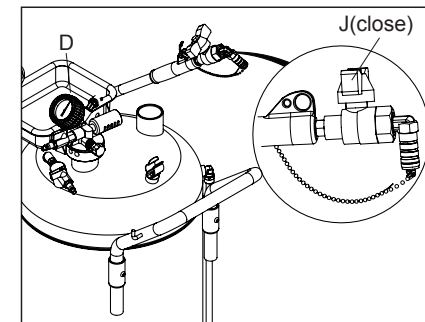
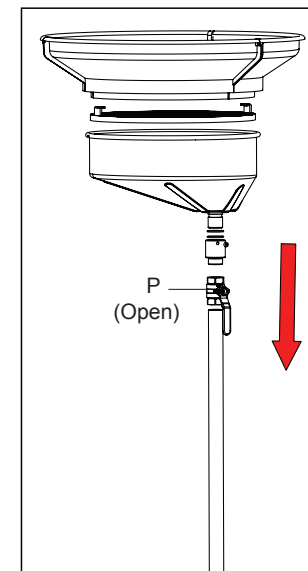


Fig.4: Assemble the supporting tube, ball valve (P), oil collecting bowl, filtrating plank and extension funnel orderly.



OPERATION SUCKING

Fig.5: Close all the valves (K、J、H、I、L). Turn on the handwheel (E) anticlockwise direction and turn on the valve(L).

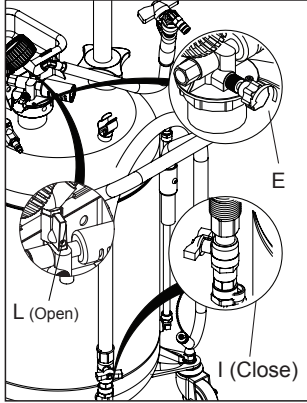


Fig.6: Connect the air supply, and make the vacuum gauge (F) index reach the green area.

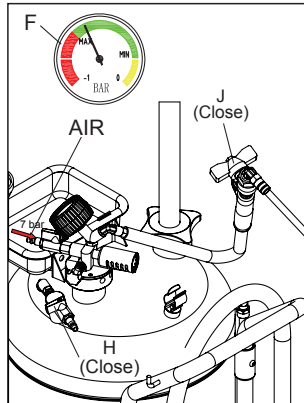
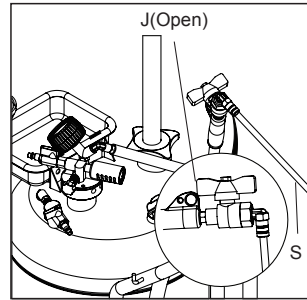


Fig.7: Connect the probe (S), then put it into the car engine, turn on the ball valve (J) for sucking oil.



COLLECTING

Fig.8: Close all the valves (K、P、J、H、I、L). Turn on the ball valve (P) and the valve (H).

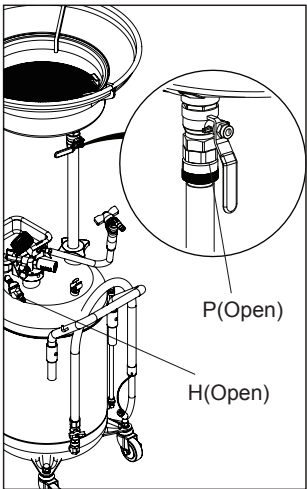
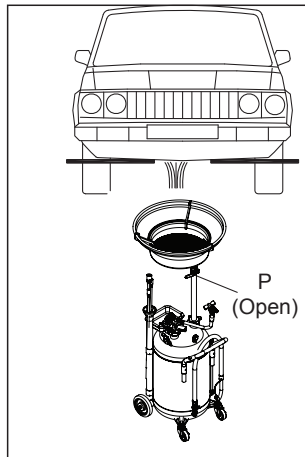


Fig.9: Place the oil drainer under the car to collect the waste oil. Turn on the ball valve(P).



DRAINING

Fig.10: Close all the valves (K、P、J、H、I、L).

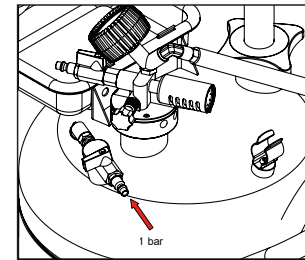


Fig. 11: Close the handwheel (E) clockwise direction, put the spout (M) into the waste oil tank, then open the valve (I).

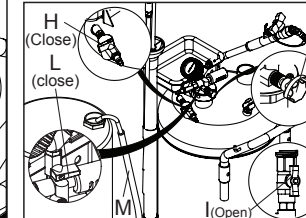
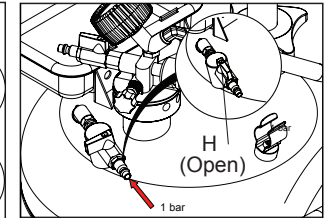


Fig.12: Connect the air supply, and open the valve (H) for draining.



TROUBLE SHOOTING GUIDE

Problem	Cause	Solution
Turn on the air source, the vacuum gauge index no move	Damage or jam on the vacuum gauge	Change the vacuum gauge
The index on vacuum gauge can't reach the green area	1. Air supply pressure is too low 2. Air flow is not enough	1. Increase the air supply pressure 2. Enlarge the air inlet diameter, shorten the hose length
The vacuum gauge index reaches the green area, but oil still can't be suction	1. Oil temperature is too low 2. There is jam in valve of the suction hose 3. There is jam inside the suction hose or suction fitting	1. Increase the oil temperature (eg. start the engine etc.) 2. Clean up the valve 3. Clean or change the suction hose or suction fitting
The vacuum gauge showing the leakage and can't suction the oil	1. O-ring of the suction fitting is broken 2. The bottom of the suction hose is higher than the oil level	1. Change the O-ring immediately 2. Keep the suction hose straight and ensure the hose touch with the oil

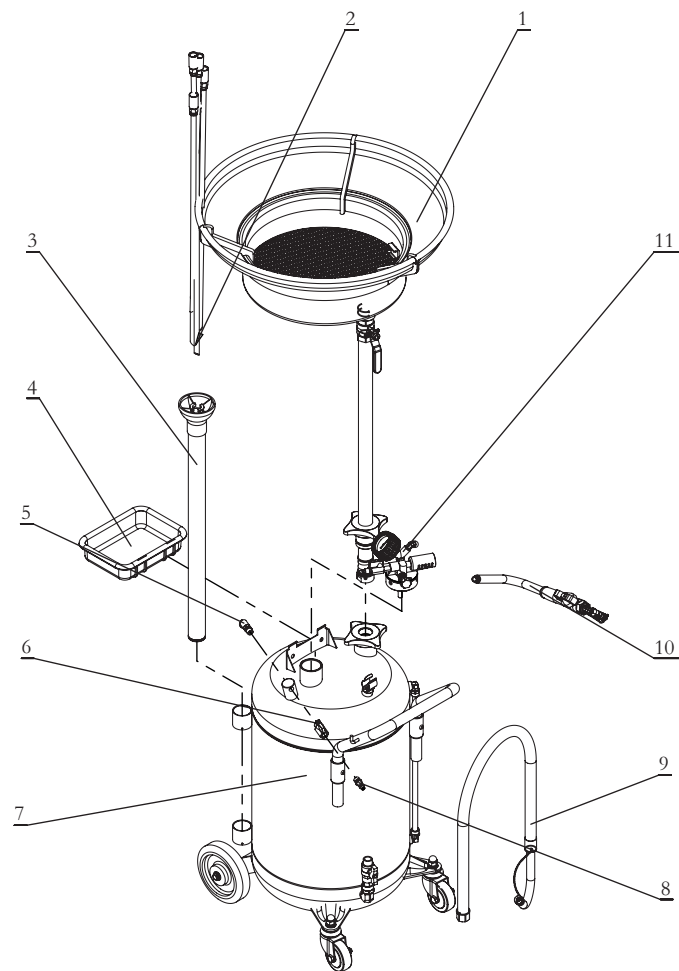
CAUTION

- Never fill the reservoir over the maximum level indicated by the gauge that is located on the side of the reservoir.
- Don't exceed maximum pressure 1bar/14.5psi for draining.
- Air pressure for vacuum is maximum 8bar/115psi.
- Open the bottom nut of the reservoir termly and clean out any dirty to avoid jam.

LIMITED WARRANTY

- The manufacturer warrants this product against defects in material and craftsmanship, for a period of one year from date of purchase, but not including wearing parts.
- Manufacturer's liability is limited to replacement or repair of defective material within the warranty period.
- The warranty does not cover damage caused by accident, misuse or faulty installation.
- The product must be installed and maintained in compliance with the instructions.

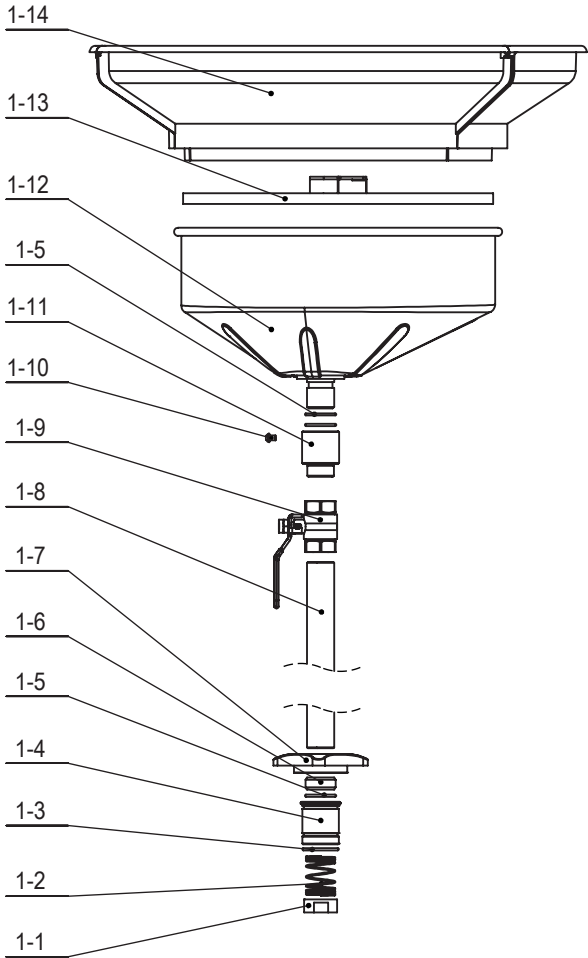
EXPLODED & PART LIST



Part No.	Description	Q'ty	Part No.	Description	Q'ty
1	Oil collecting bowl assembly	1	7	Reservoir	1
2	Probe kit	1	8	Quick plug	1
3	Probes container	1	9	Discharging hose assembly	1
4	Tool tray	1	10	suction hose assembly	1
5	Safety valve	1	11	Vacuum assembly	1
6	Ball valve	1			

#: Optional accessories
*: Wearing parts

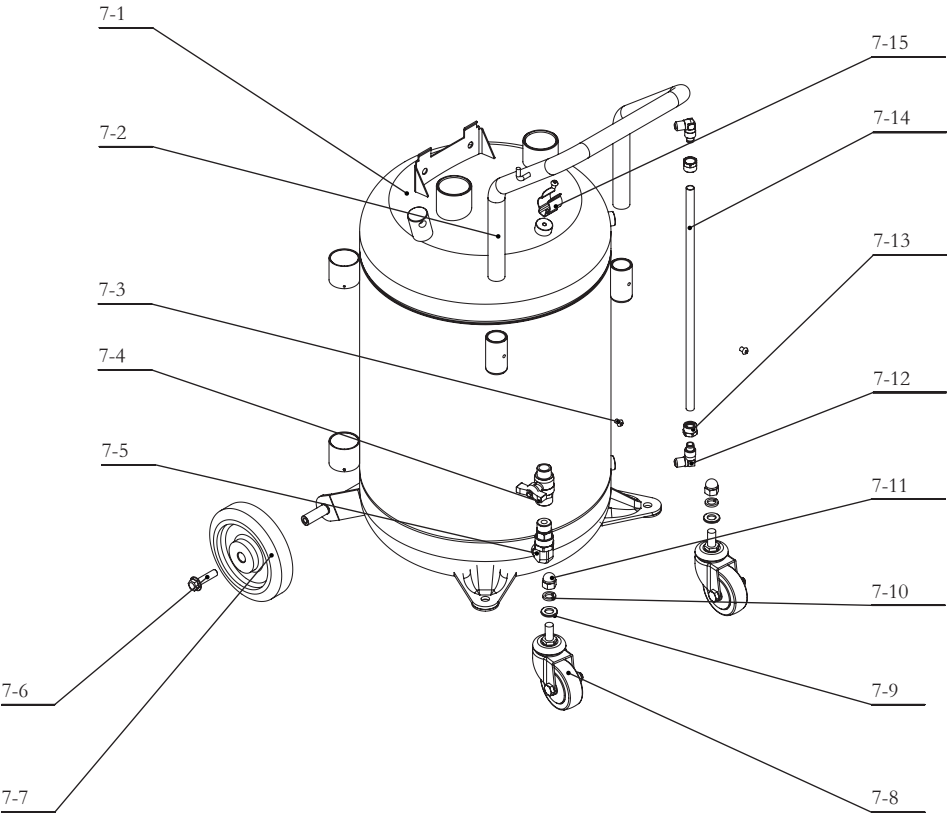
OIL COLLECTING BOWL ASSEMBLY & PART LIST



Part No.	Description	Q'ty	Part No.	Description	Q'ty
1-1	Check nut	1	1-8	Supporting tube	1
1-2	Compression spring	1	*1-9	Ball valve	1
*1-3	O-ring	2	1-10	Nut	1
1-4	Sealing bush	1	1-11	Retainer sleeve	1
*1-5	O-ring	4	1-12	Oil collecting bowl	1
1-6	Expansion cover	1	1-13	Filtrating plank	1
1-7	Handwheel	1	#1-14	Extention funnel	1

#: Optional accessories
*: Wearing parts

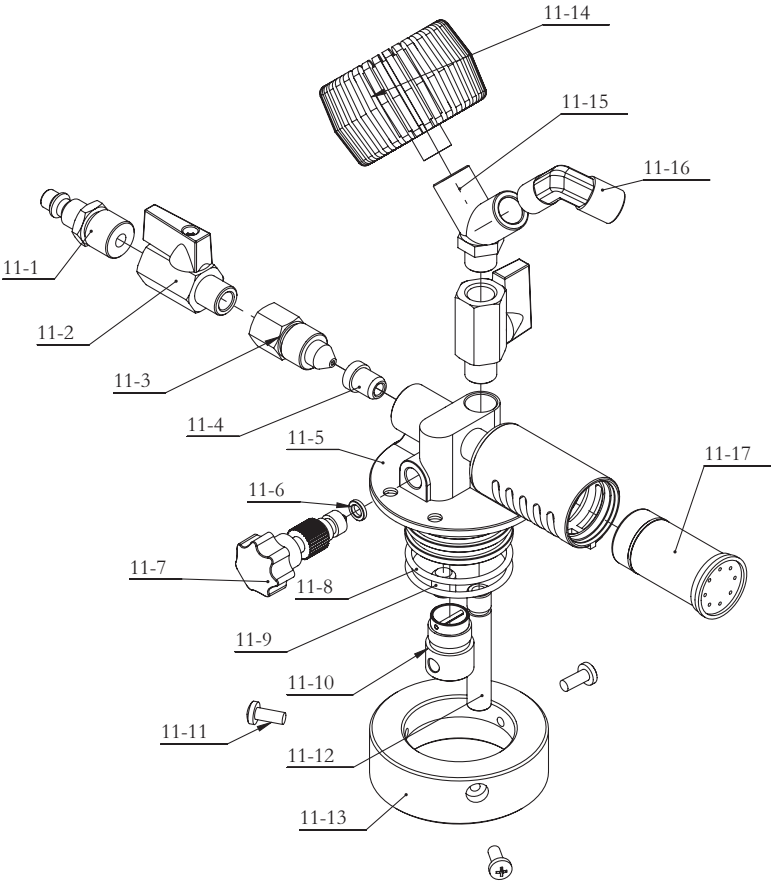
RESERVOIR & PART LIST



Part No.	Description	Q'ty	Part No.	Description	Q'ty
7-1	Reservoir assembly	1	7-9	Spring washer	2
7-2	Handle	1	7-10	Gasket	2
7-3	Screw	3	7-11	Nuts	2
7-4	Butterfly valve	1	7-12	Elbow	2
7-5	Swivel fitting	1	7-13	Nut	2
7-6	Bolts	2	7-14	Tube with lable	1
7-7	Wheel	2	7-15	Clip	1
7-8	Caster	2			

#: Optional accessories
*: Wearing parts

VACUUM ASSEMBLY & PART LIST



Part No.	Description	Q'ty	Part No.	Description	Q'ty
*11-1	Quick plug	1	11-10	Check valve	1
*11-2	Ball valve	2	11-11	Screw	3
11-3	Muzzle	1	11-12	inlet hose	1
11-4	Negative pressure core	1	11-13	nut	1
11-5	Seat	1	11-14	Vacuum meter	1
11-6	O-ring	1	11-15	Y-shape adapter	1
11-7	handle wheel	1	11-16	Elbow	1
*11-8	O-ring	2	11-17	Silencer	1
11-9	Screw	1			

#: Optional accessories
*: Wearing parts